



Renlita Bifolding Doors

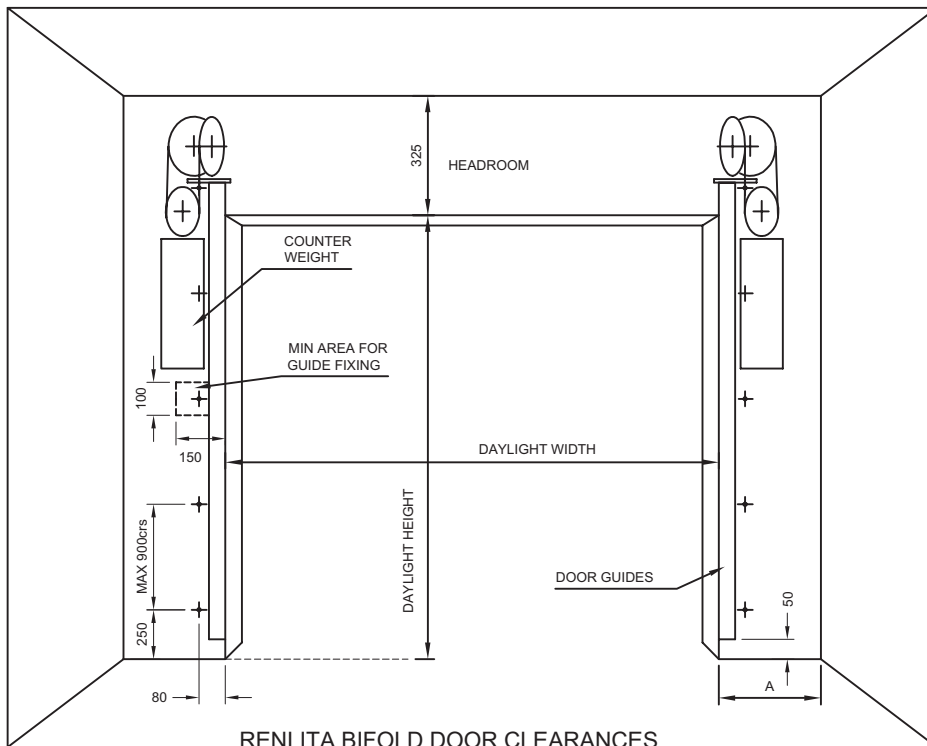
Applications

Workshops, schools, architectural designed houses, factories, warehouses, industrial buildings, and large commercial openings.

Features

- Frame fabrication from zinc coated mild steel box sections and torsion bars to form a light but exceptionally strong truss construction.
- Door cladding can be arranged to combine various glazing systems, timber, colour steel or aluminium profiled cladding or mesh infill panels.
- Renlita folding double leaf doors can be constructed to suit openings in excess of 25 metre wide.
- Operated manually or motorised gearbox drive.
- Doors are custom made to fit the size of opening.
- Sales Asia Oceania wide.
- Branches in Auckland, Wellington and Christchurch.

50 years of manufacturing experience and continuous refinement.
Service and repairs, 24 hours a day, on all makes of commercial doors.



RENLITA BIFOLD DOOR CLEARANCES

SIZE OF OPENING (m)	SIDE ROOM A	MOTOR PROJECTION B	*LOSS OF OPENING HEIGHT C
Up to 6.0 HIGH & 6.0 WIDE	250	600	350
Up to 8.0 HIGH & 10.0 WIDE	250	600	385
Up to 10.0 HIGH & 12.0 WIDE	450	600	400
Up to 10.0 HIGH & 15.0 WIDE	450	600	500
Up to 10.0 HIGH & 20.0 WIDE	450	600	600

* Note Cladding & glazing profiles will affect the doors stacking depth and side room. Motorising recommended for doors over 5m high and 8m wide.

DOOR LEAVES

Two horizontally folding leaves hinge at mid height rising upwards as they open. The construction of the door frame accepts a range of glazing and cladding options. Peripheral seals can be included. When opened the door will rest at a slight incline to allow rainwater to run off.

FINISH

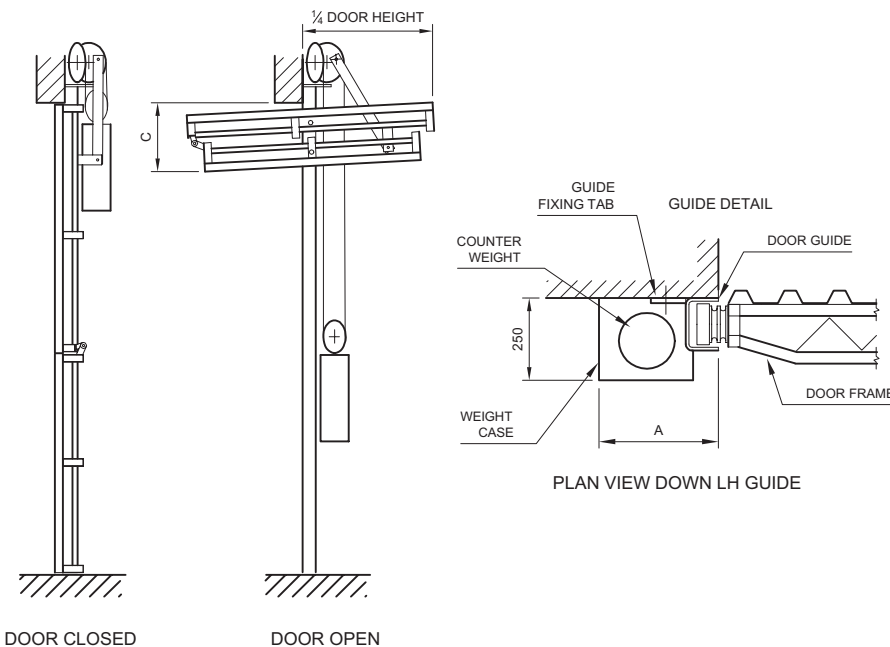
Standard frames are fabricated using zinc coated steel with welds being cleaned and painted with coldgalv. The guides and counterweights are supplied prime painted. Hot dip galvanising, zinc spraying, powdercoating and painting options available.

OPERATION

The doors are accurately counterweighted to ensure ease of operation even for large openings. Manual doors latch into position when fully open to overcome any windage effects. This latch is automatically disengaged with the pull down hook supplied. Electric operation is by compact three phase 0.37kW electric motor, driving an enclosed worm gearbox. Speed of operation approximately 200mm per second. Assemblies are supplied complete with reversing starter and limit switches. Door controllers to accept signals from a range of activation features are also available.

GUIDES

Constructed from pressed steel and fixed to the jambs with cleats. The guides support the weight of the door leaves and counterweights. The bottom 2.4m of counterweight travel is protected by a 1mm thick galvanised steel pressing.



Standard doors meet the 5 year durability requirements of the N.Z.B.C. Details available on request.

We reserve the right to alter specification without notice and without incurring obligation



Auckland

PO Box 71 169 Rosebank
26 Timothy Place, Avondale
Telephone: 09 828 1167
Fax: 09 828 6358
mbilt.auck@tycoint.com

Wellington

PO Box 38 933 W.M.C
55 Cuba Street, Petone
Telephone: 04 568 2933
Fax: 04 568 7337
mbilt.well@tycoint.com

Christchurch

PO Box 6033, Upper Riccarton
60 Lunns Roads, Middleton
Telephone: 03 338 2600
Fax: 03 338 4386
mbilt.chch@tycoint.com